

# Health Impact Assessment: the why and what

Dec 2009

Christine Stewart

Senior Advisor (HIA)

Health Impact Assessment Support Unit

Office of the Director of Public Health

# Overview

1. What is health?
2. What is HIA?
3. HIA Support Unit
4. HIA and physical activity
5. How we can support you

# What is health?

- Health is defined in different ways by different cultures.....

# Health is:

- a state of complete physical, mental and social well-being and not merely the absence of disease or infirmity (WHO 1948)
- a resource for everyday life, not the objective of living. Health is a positive concept emphasizing social and personal resources, as well as physical capacities (WHO 1986 )

# FONOFALE

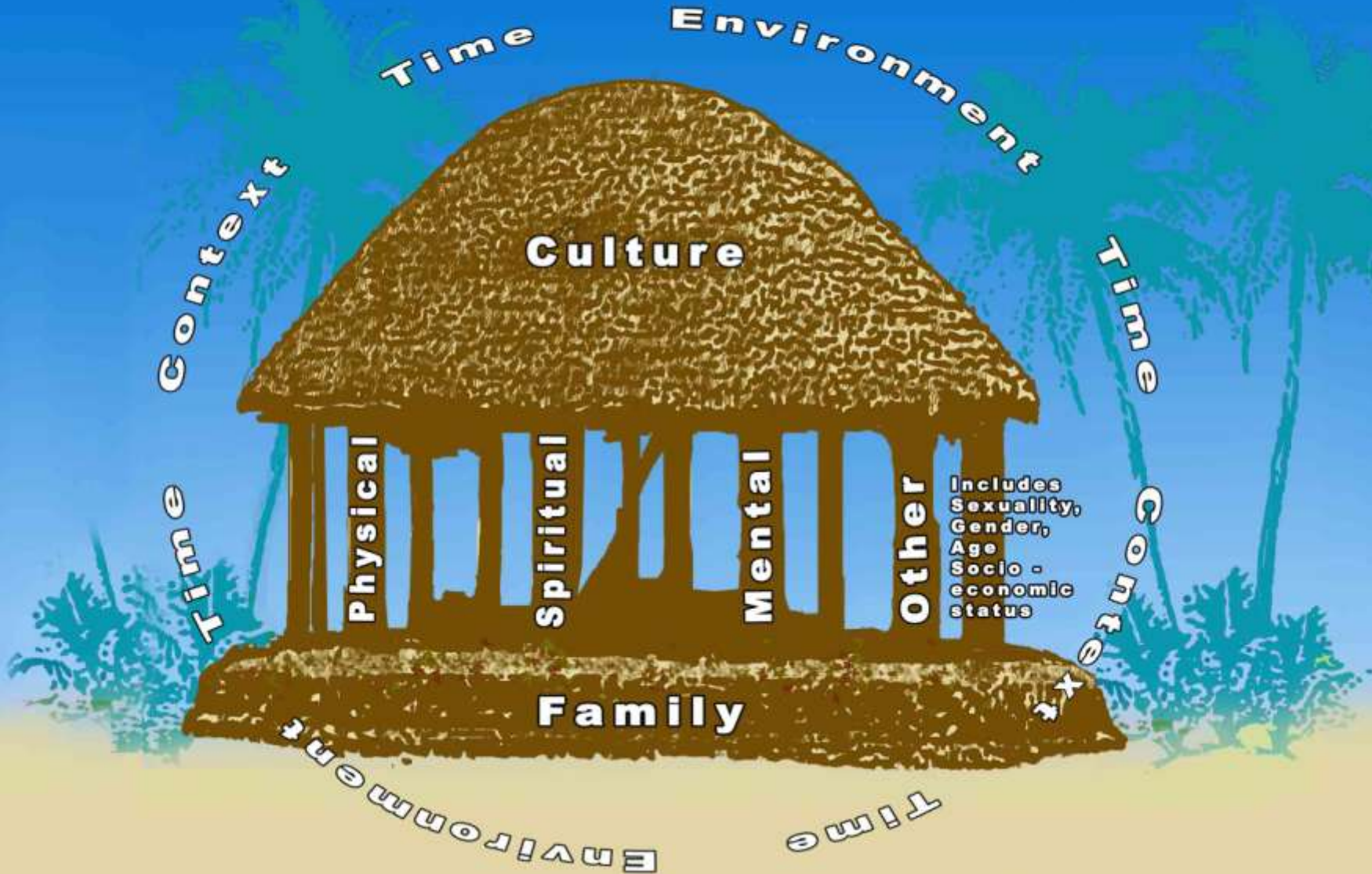
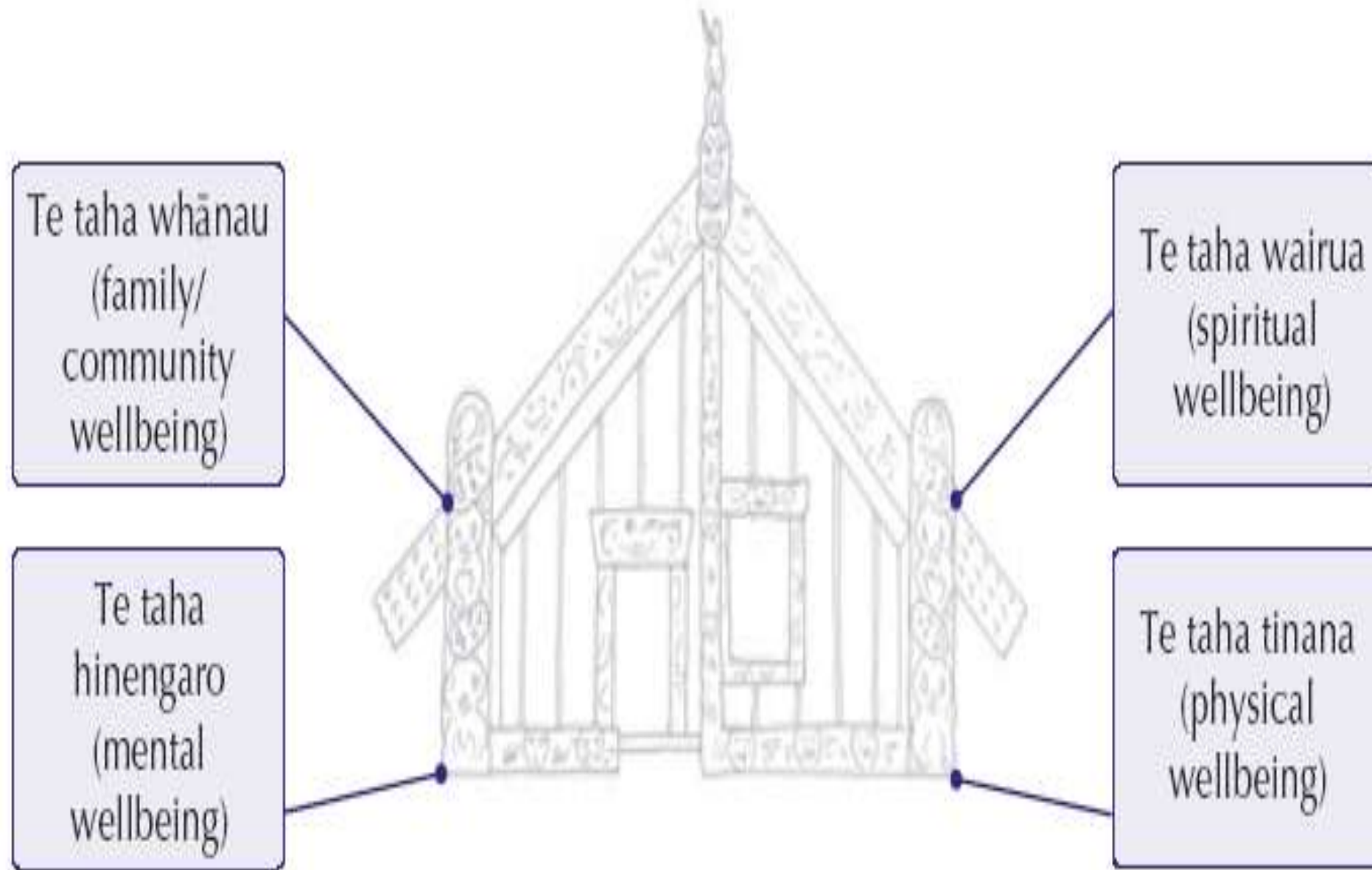
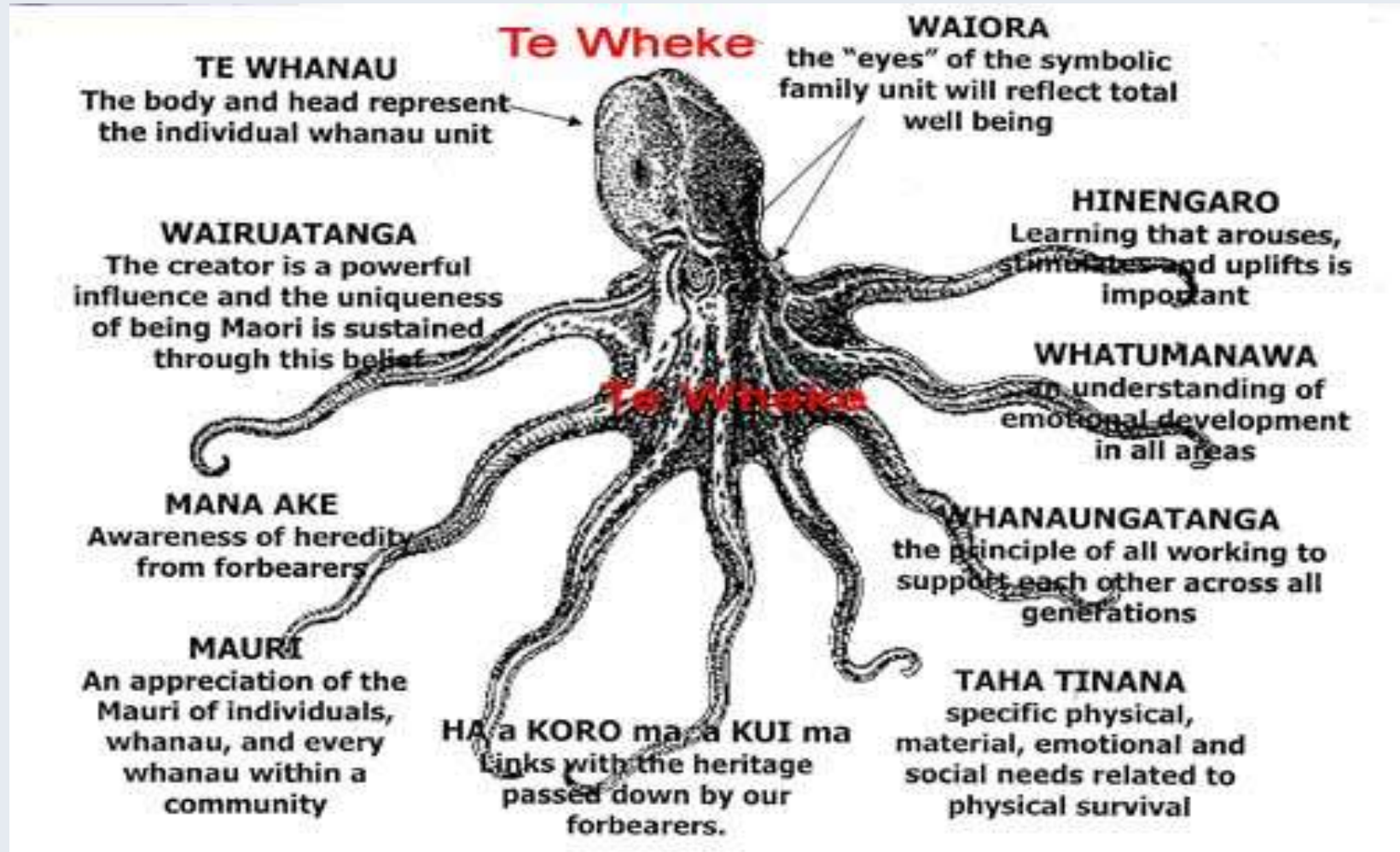


Figure 1: Te Whare Tapa Wha model of health<sup>11</sup>



# Te Wheke

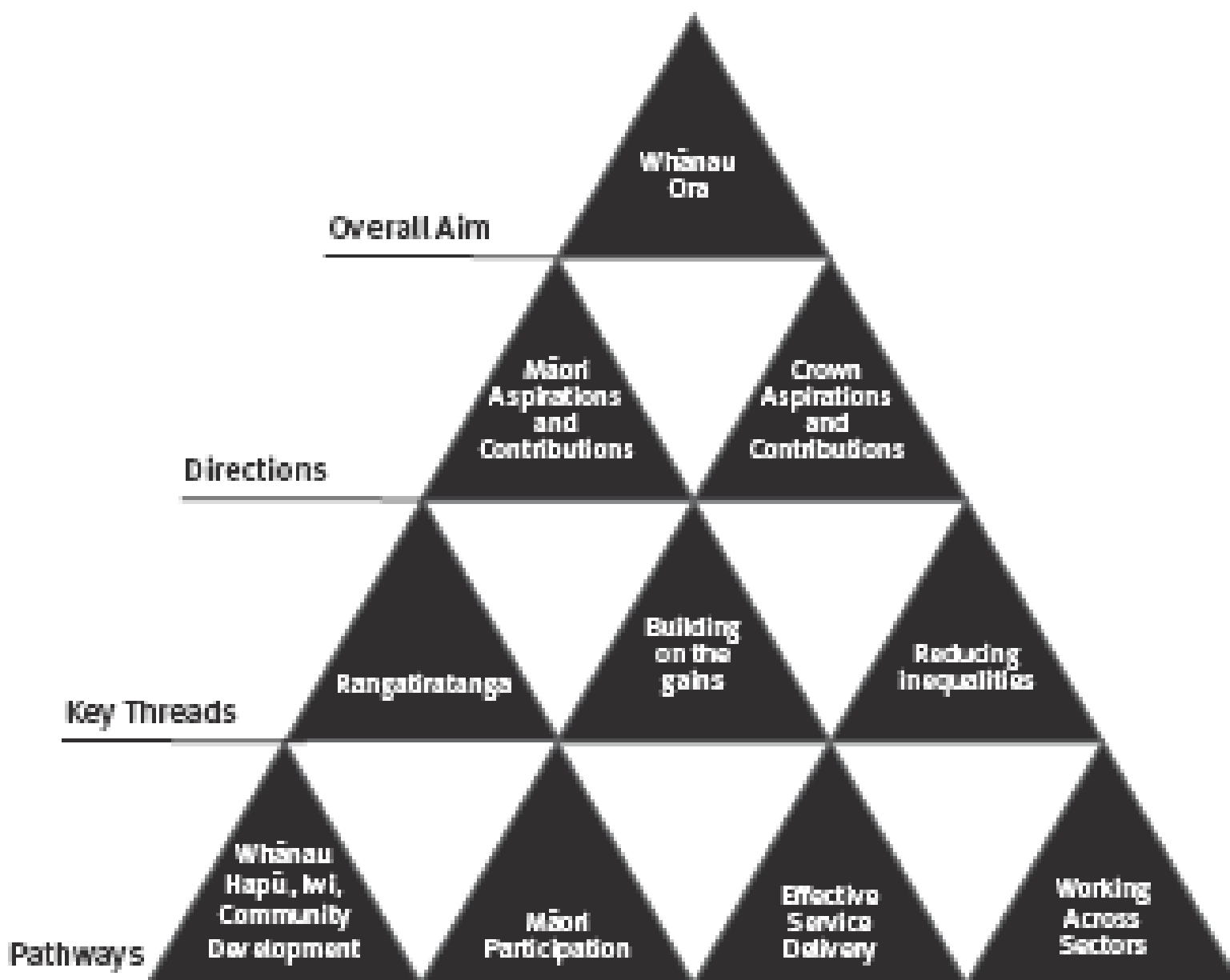
(Rose Pere, 1988, 1991)



# whānau ora: Māori families supported to achieve their maximum health and wellbeing

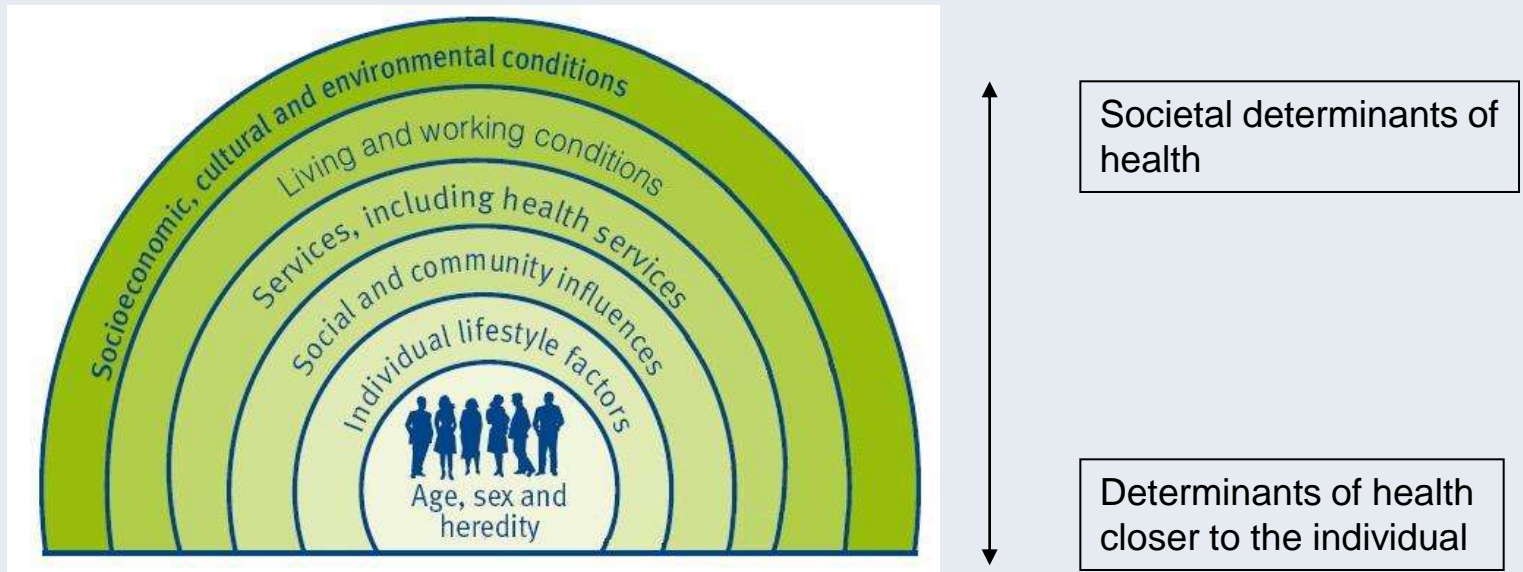


Figure 1: He Korowai Oranga overarching framework



# Multiple causes of health

- Broad societal factors have the biggest impact on health (particularly income, education and employment).
- These factors also influence individual behaviours and health service use.

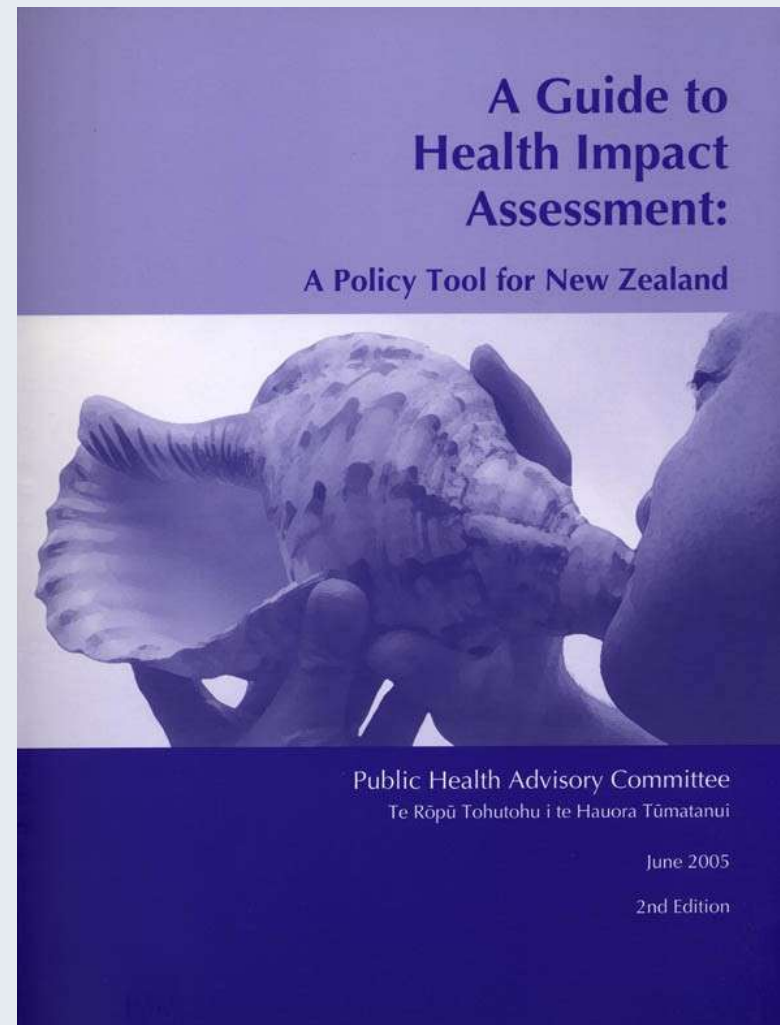


# What is HIA?

- A formal approach to predict (identify and assess) the health impacts of a draft policy, especially impacts on health inequalities, and make these impacts explicit.
- Provides a broader base of information for decision-making and developing win-win solutions.
- Builds stakeholder relationships.

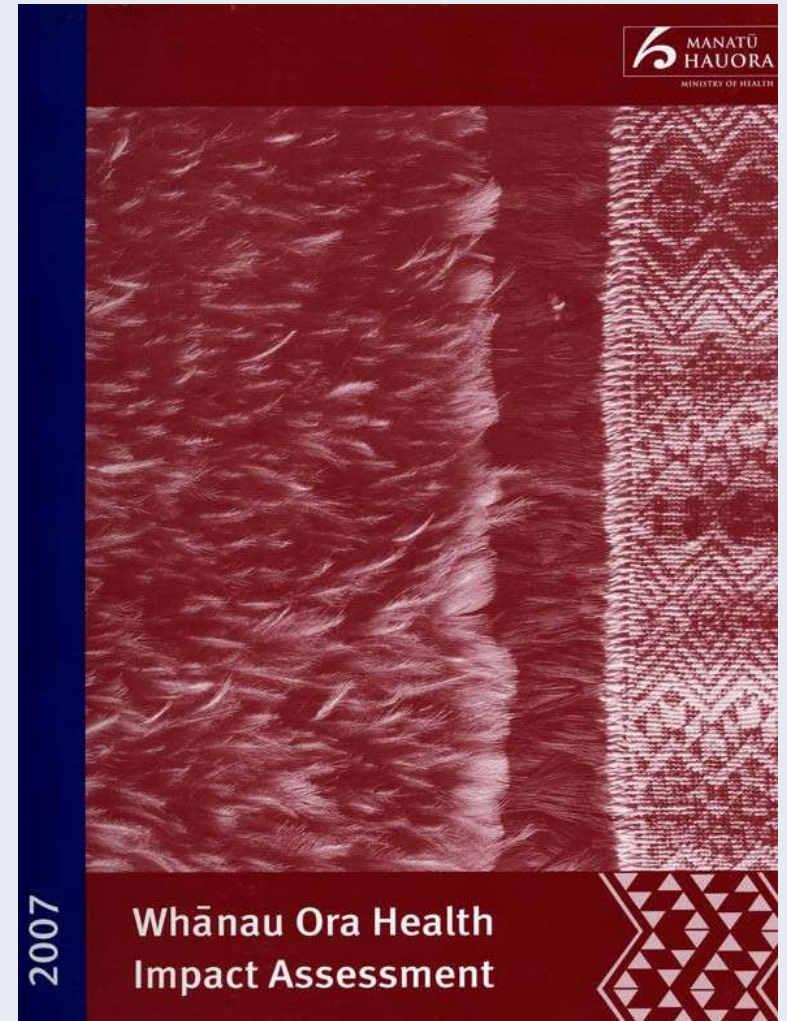
# PHAC Guide to Health Impact Assessment

1840: Treaty of Waitangi  
1995: consultation with iwi for air, land and water impacts (via RMA)  
Late 1990s-early 2000s: recognition of wider determinants of health/ health inequalities  
2004 and 2005: Public Health Advisory Committee guidelines on HIA at a policy level



# Whānau Ora Health Impact Assessment

The only HIA tool  
in the world for  
an indigenous  
people –  
developed by  
Māori for use by  
all



# Policy Cycle and HIA <sup>1</sup>

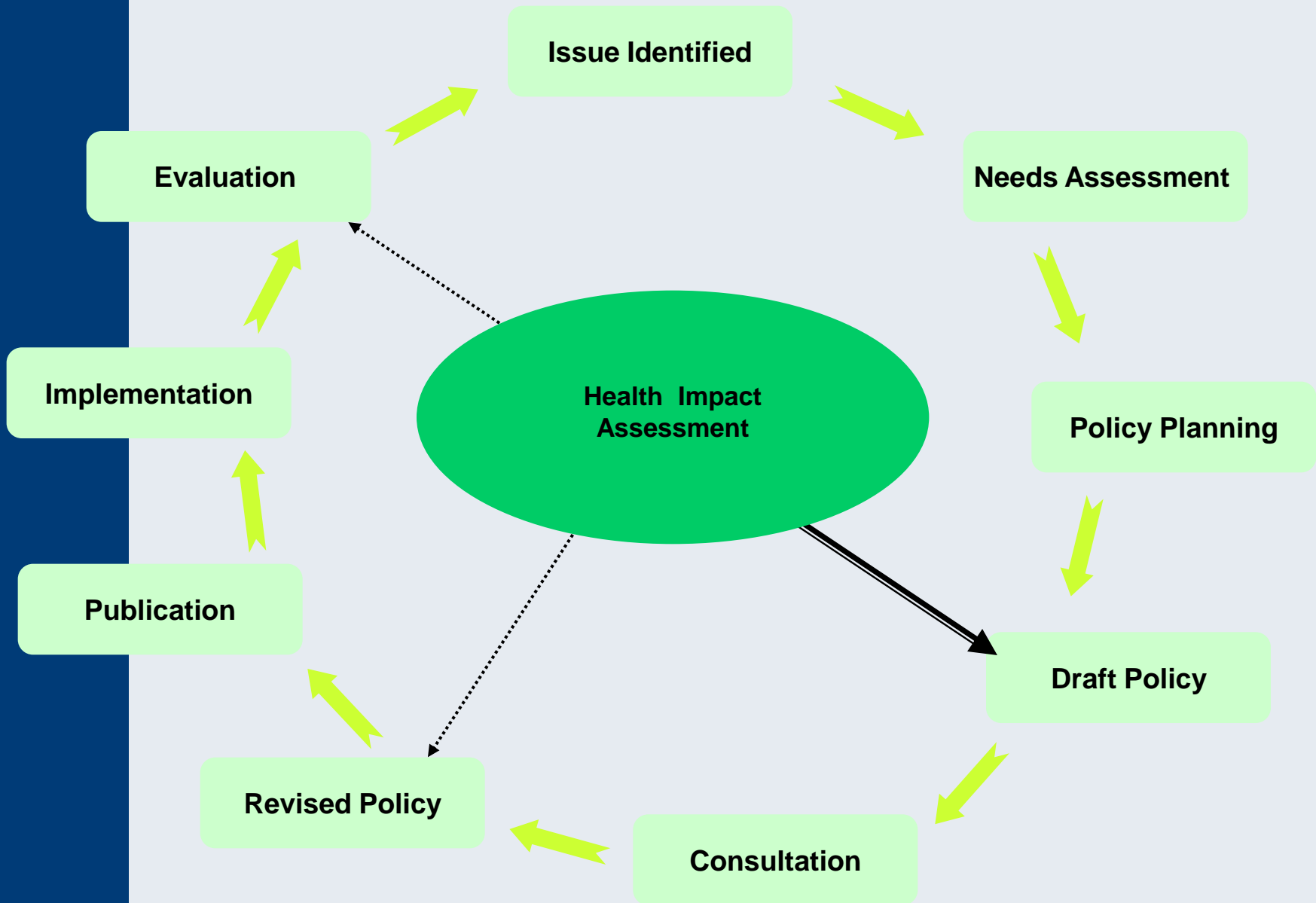
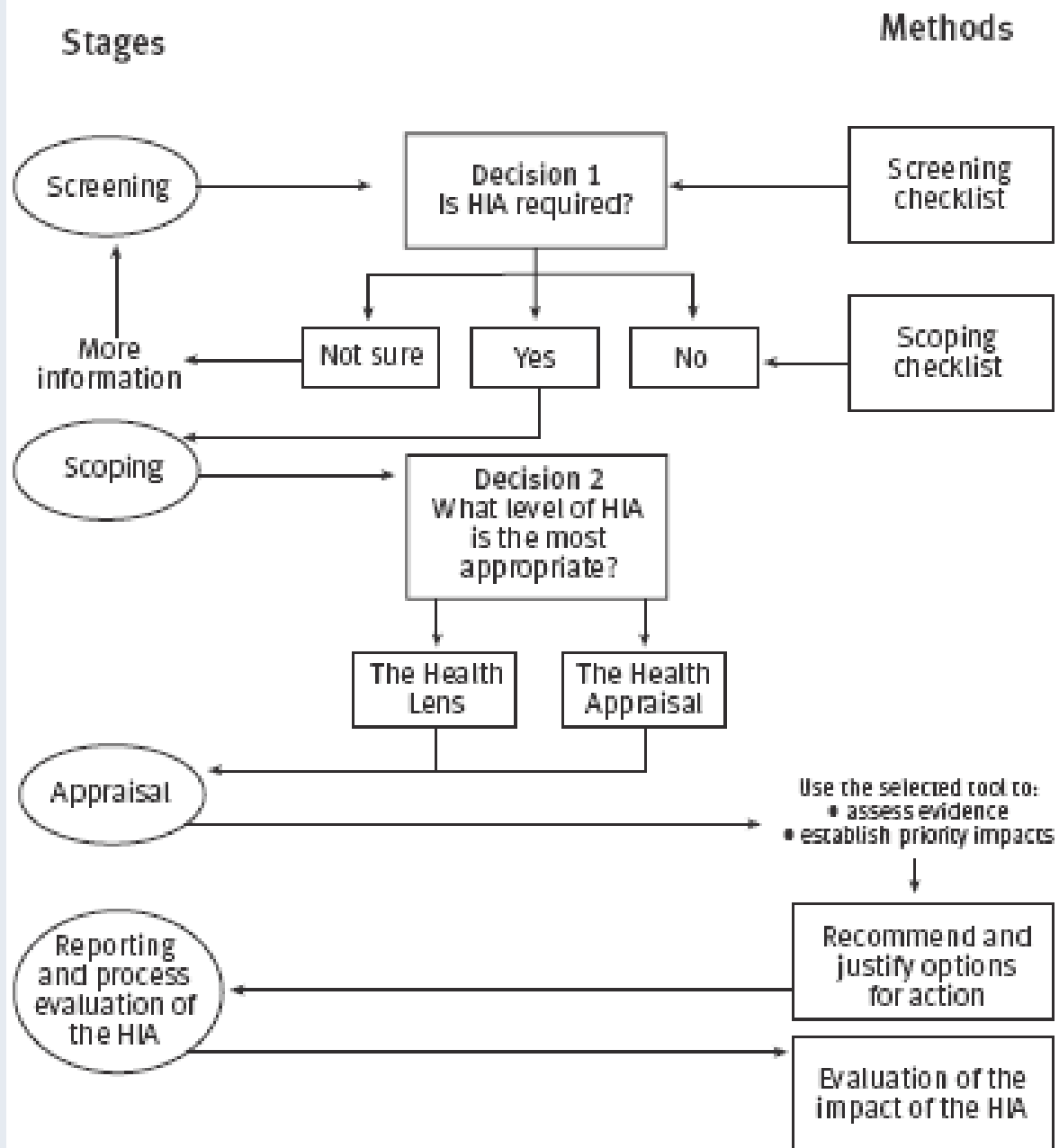


Figure 4: The health impact assessment process



Source: Adapted from Scott-Samuel et al 2001

# The HIA Support Unit

- Cabinet recommendation 2006
- Establishment of Unit 2007
- First full operational year 2008/09
  - Baseline Ministry funding and Mission-On annual project funding
  - Strategic framework
  - Annual workplan
  - External reference group

# Our aims and objectives

## AIMS

- To contribute to improving health outcomes and reducing health inequalities in New Zealand
- To embed HIA into public policy development processes to support better and more informed decision making

## OBJECTIVES

- Raise awareness
- Building partnerships
- Provide technical advice and support
- Build an evidence base
- Create capacity

# Capacity building

- Learning by Doing Investment to build capacity
- Training
  - HIA training – regional and national
  - Summer School –
    - <http://www.wnmeds.ac.nz/academic/dph/summerschool/index.html>
  - HIA Practitioner Workshops
- Completed and written up HIAs
  - Screening
  - Scoping
  - Appraisal and reporting
  - Evaluation
- Integration of HIA into strategy, policy and programme development

# HIA in the Ministry

- Revision of Public Health Services Handbook to include new HIA in the Social Environments service specifications
- Internal Ministry of Health HIA Screening Tool and Training
- Development of HIA evidence bulletins
- External evaluation of the HIA Support Unit

# HIA at Central Government level

- Presentations to various central government forums
- Approaching various government departments: specific topic and natural partner agencies e.g. transport agencies
- Major events work

# HIAAs completed or in progress in New Zealand

- 40 completed or in progress
  - 13 between 2004 and 2007
  - 27 since 2007
    - 14 of those 27 funded by HIA Support Unit
- Most relate to the physical environment
- Most led by District Health Boards or Public Health Units, 5 led by local government

# Examples of HIAs

- **McLennan Housing Development, Papakura HIA (2008)**
- **Greater Wellington Regional Land Transport Strategy HIA (2006)**
- **Mangere Growth Centre Plan HIA (2006)**

# How can we support you?

- Contact us as a 'help desk'
- Run HIA ideas past us
- Peer review process
- Training
- Webpage:  
<http://www.moh.govt.nz/hiasupportunit>
- HIA e-News- Bi-monthly newsletter,  
<http://www.moh.govt.nz/moh.nsf/indexm h/hiasupportunit-eneews>

# Contact Us

hia@moh.govt.nz

matt\_soeberg@moh.govt.nz

04 816 2672

christine\_stewart@moh.govt.nz

04 816 2837